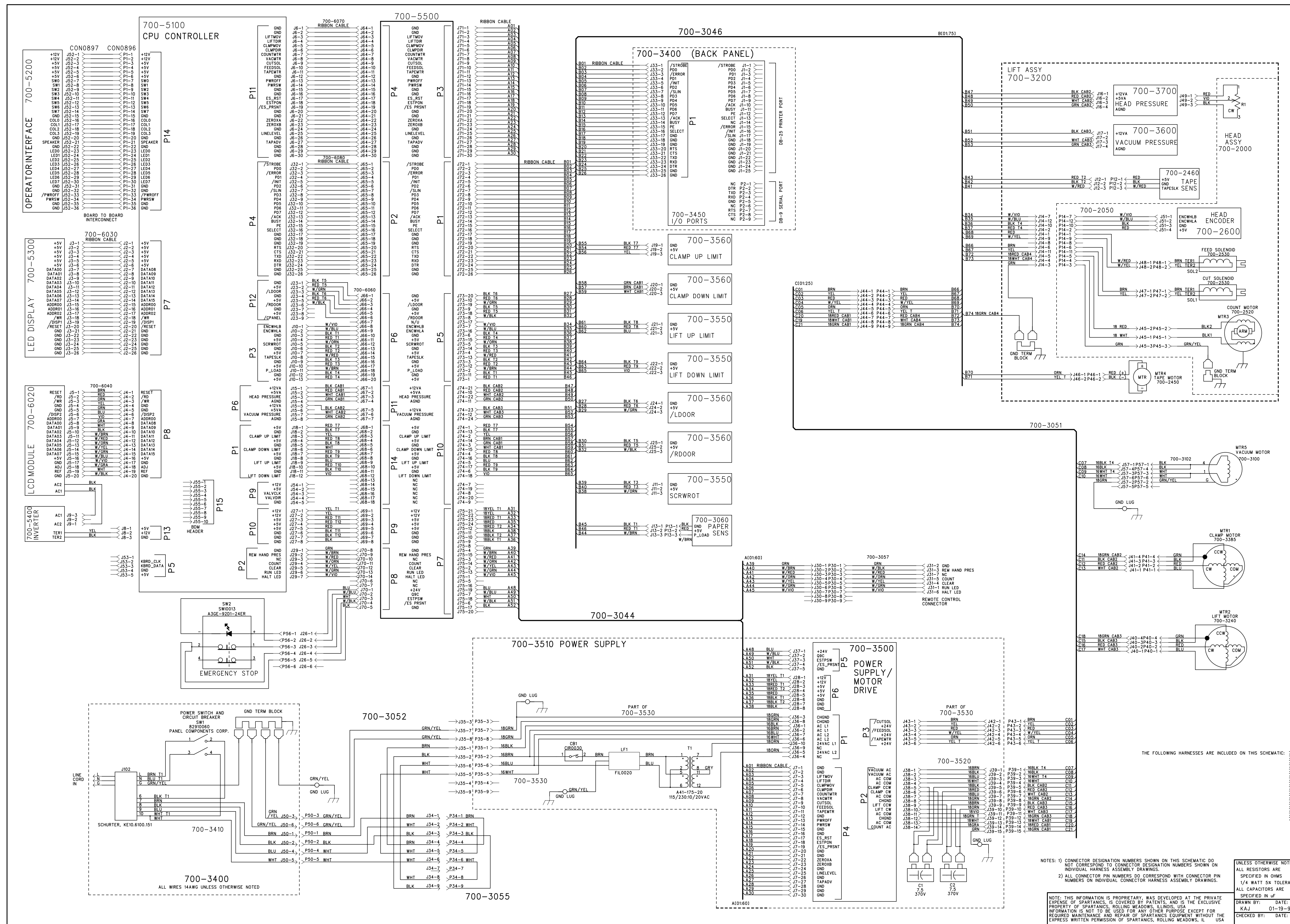


REV	ECO	DESCRIPTION	DATE
0	----	CREATED	01-19-96 KJ
1	----	ADDED 700-5500	08-26-96 KJ



THE FOLLOWING HARNESES ARE INCLUDED ON THIS SCHEMATIC:

700-2050	HEAD ENCODER
700-3044	CLAMP UP LIMIT
700-3046	CLAMP DOWN LIMIT
700-3052	LIFT UP LIMIT
700-3054	LIFT DOWN LIMIT
700-3057	L/DOOR
700-3058	R/DOOR
700-3410	EMERGENCY STOP
700-3440	HEAD PRESSURE
700-3450	VACUUM PRESSURE
700-6030	LED DISPLAY
700-6040	LCD MODULE
700-6070	INVERTER
700-6080	OPERATOR INTERFACE
700-6090	CPU CONTROLLER

UNLESS OTHERWISE NOTED:  
 ALL RESISTORS ARE SPECIFIED IN OHMS  
 1/4 WATT 5% TOLERANCE  
 ALL CAPACITORS ARE SPECIFIED IN UF

NOTE: THIS INFORMATION IS PROPRIETARY. WAS DEVELOPED AT THE PRIVATE EXPENSE OF SPARTANICS, IS COVERED BY PATENTS, AND IS THE EXCLUSIVE PROPERTY OF SPARTANICS, ROLLING MEADOWS, ILLINOIS, USA. INFORMATION IS NOT TO BE USED FOR ANY OTHER PURPOSE EXCEPT FOR REQUIRED MAINTENANCE AND REPAIR OF SPARTANICS EQUIPMENT WITHOUT THE EXPRESS WRITTEN PERMISSION OF SPARTANICS, ROLLING MEADOWS, IL, USA.

CHECKED BY: DATE: DRAWN BY: DATE: PART NAME: SHEET: 700-3001-1 1 OF 1